

Protecting Fish & Wildlife Habitat: ADF&G Instream Flow Program



Ann Marie Larquier
Alaska Department of Fish & Game
Division of Sport Fish - RTS



Overview

- Background on Instream Flow Protection
- Water Reservations in Alaska
- ADF&G Current Southeast Alaska Projects



Summary of Alaska's Water Law

- Alaskan Constitution
 - Approved in 1959
 - Prior appropriation doctrine
- Alaska Water Use Act (AS 46.15)
 - Passed in 1966
 - Alaska DNR assigned the authority to administer water appropriation
 - Established the procedure for obtaining water rights for **out-of-stream** uses

Summary of Alaska's Water Law

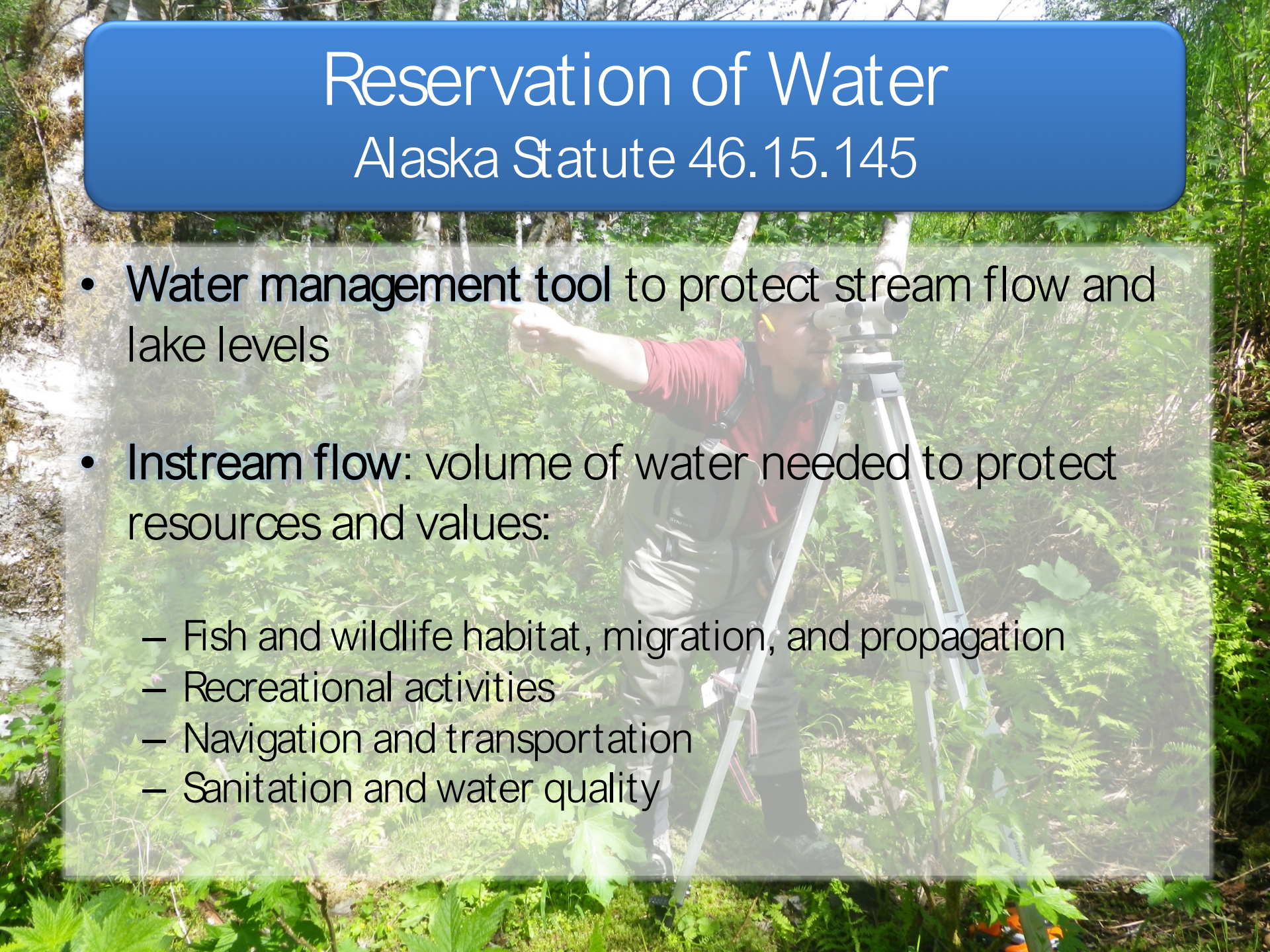
- Reservation of Water amendment (AS 46.15.145)
 - Passed in 1980
 - Established the procedure for obtaining water rights for **instream** uses
 - Reservation of Water



Reservation of Water

Alaska Statute 46.15.145

- **Water management tool** to protect stream flow and lake levels
- **Instream flow:** volume of water needed to protect resources and values:
 - Fish and wildlife habitat, migration, and propagation
 - Recreational activities
 - Navigation and transportation
 - Sanitation and water quality





Discussing Water Rights, A Western Pastime

ADF&G Instream Flow Program

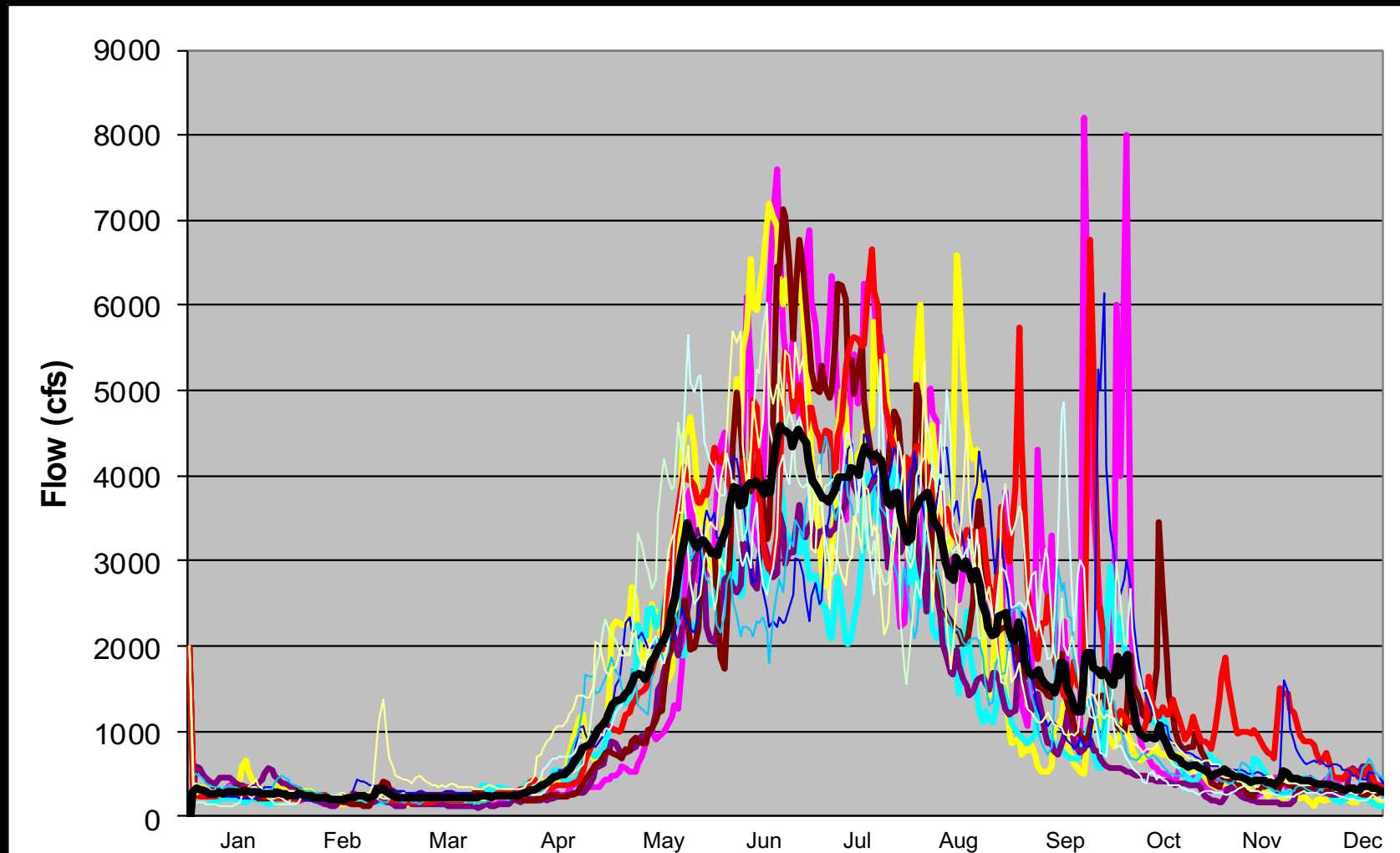
To sustain healthy fish and wildlife habitat by protecting **instream flow**

Estimation of Instream Flows Needed to Sustain Fish

- Application filed to DNR using scientific based methods calibrated to site-specific biological and hydrologic conditions
- Objective to recommend seasonal flow regimes that mimic natural conditions to which fish have adapted

Key Components of the Natural Flow Regime

Magnitude Frequency Duration Timing Rate of change



Fish Species Information

(Presence/absence, life phase, distribution, timing)

Example Fish Periodicity Table

Coho Salmon

	Jan	Feb	Mar	Apr	May	Jun	Jul	Aug	Sep	Oct	Nov	Dec
Smolt Passage				XXXX	XXXX	XX						
Adult Passage							XXXX	XXXX	XXXX	XXXX		
Spawning								XXXX	XXXX	XXXX	X	
Incubation	XXXX	XXXX	XXXX	XXXX				XXXX	XXXX	XXXX	XXXX	XXXX
Rearing	XXXX	XXXX	XXXX	XXXX	XXXX	XXXX	XXXX	XXXX	XXXX	XXXX	XXXX	XXXX


Pink Salmon

Smolt Passage				XXXX	XXXX	X						
Adult Passage							XX	XXXX	XXXX			
Spawning							X	XXXX	XXXX			
Incubation	XXXX	XXXX	XXXX	XXXX			X	XXXX	XXXX	XXXX	XXXX	XXXX
Rearing												




Application Submittal

- Application is submitted with supporting information to DNR for adjudication.
- Application receives a priority date when received by DNR.

DIVISION OF MINING, LAND AND WATER WATER RESOURCES SECTION www.dnr.state.ak.us/mlw/water/index.htm			 Alaska Department of NATURAL RESOURCES
Anchorage Office 550 West 7 th Avenue, Suite 1020 Anchorage, AK 99501-3562 (907) 269-8588 Fax: (907) 269-8947			For ADNR Use Only Date/Time Stamp
For ADNR Use Only LAS #	For ADNR Use Only CID #	For ADNR Use Only Receipt Type WR	
APPLICATION FOR RESERVATION OF WATER			
INSTRUCTIONS			
<ol style="list-style-type: none">1. Complete one application per stream segment or water body (incomplete applications will not be accepted).2. Attach legible map(s) indicating all sections from the beginning to the end of stream segment or for all parts of the lake or water body.3. Submit non-refundable fee of \$1,500.4. Attach extra pages for each section, as needed.			

ADF&G Water Reservations



River reaches: 358 filed, 157 granted

Lakes: 7 filed, 1 granted

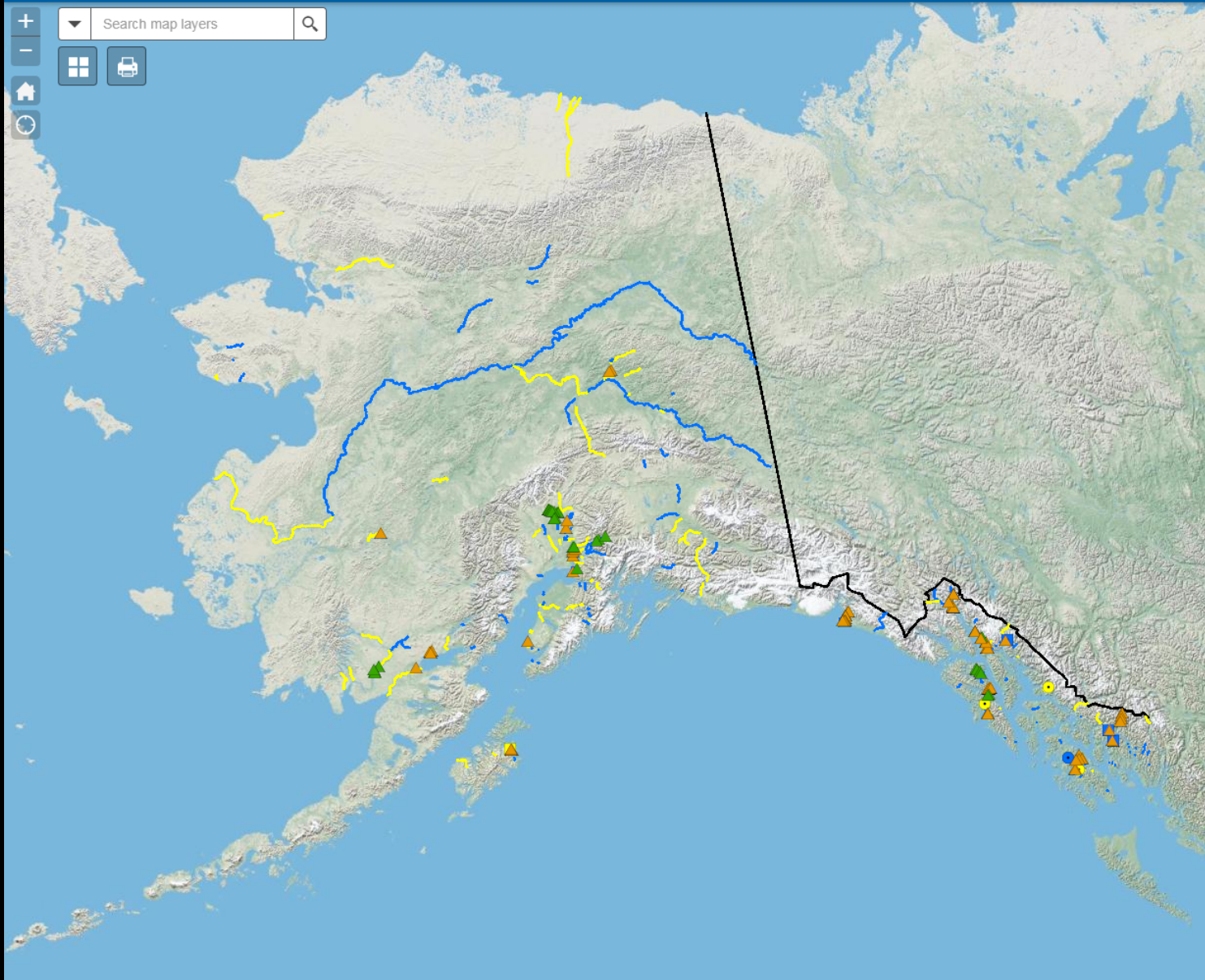
Protected fish and wildlife habitat:

2,597 river miles

1,481 surface acres of lakes



Search map layers



Legend

Instream Flow Reservations

ADF&G Streamgages

- ▲ Active
- ▲ Inactive

Lakes

- Filled
- Granted

River points

- Filled
- Granted

River reaches

- Filled
- Granted

Alaska Border



Current Southeast Alaska Projects



CURRENT SOUTHEAST ALASKA INSTREAM FLOW PROJECTS



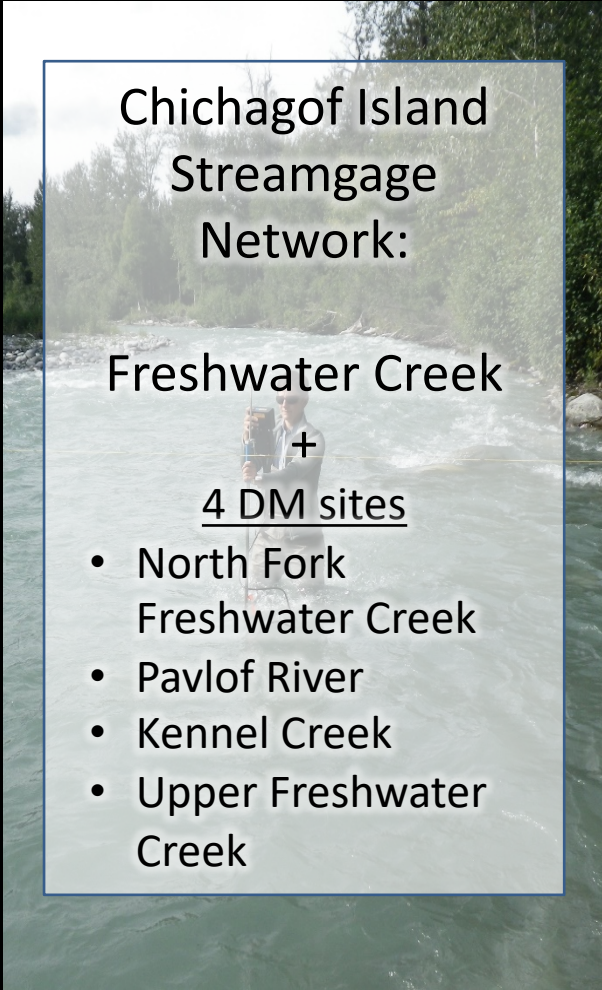
Central Prince of
Wales Island
Streamgage
Network:

Luck Creek
Control Creek

+

4 DM sites

- Ratz Creek
- Luck Creek- Reach B
- Eagle Creek
- Logjam Creek



Chichagof Island
Streamgage
Network:


Freshwater Creek

+

4 DM sites

- North Fork
Freshwater Creek
- Pavlof River
- Kennel Creek
- Upper Freshwater
Creek

Baranof Island:
Eva Creek +
1 DM site



Juneau:
Davies Creek +
Cowee Creek above
Davies confluence

ADF&G funded USGS
streamgages:
• Dangerous River
• Italio River

Contact us if you...

- Have stream discharge data to share
- Are interested in performing discharge measurements
- Would like to join us in the field!



Questions?

Joe Klein – joe.klein@alaska.gov, 267-2148

Ann Marie Larquier – ann.larquier@alaska.gov

Kevin Keith – kevin.keith@alaska.gov

Leah Ellis – leah.ellis@alaska.gov







July 26, 2018

Daves Creek



September 5, 2018



October 25, 2018



January 17, 2019



Daves Creek



