



HOONAH

JUNEAU

CHICHAGOF ISLAND

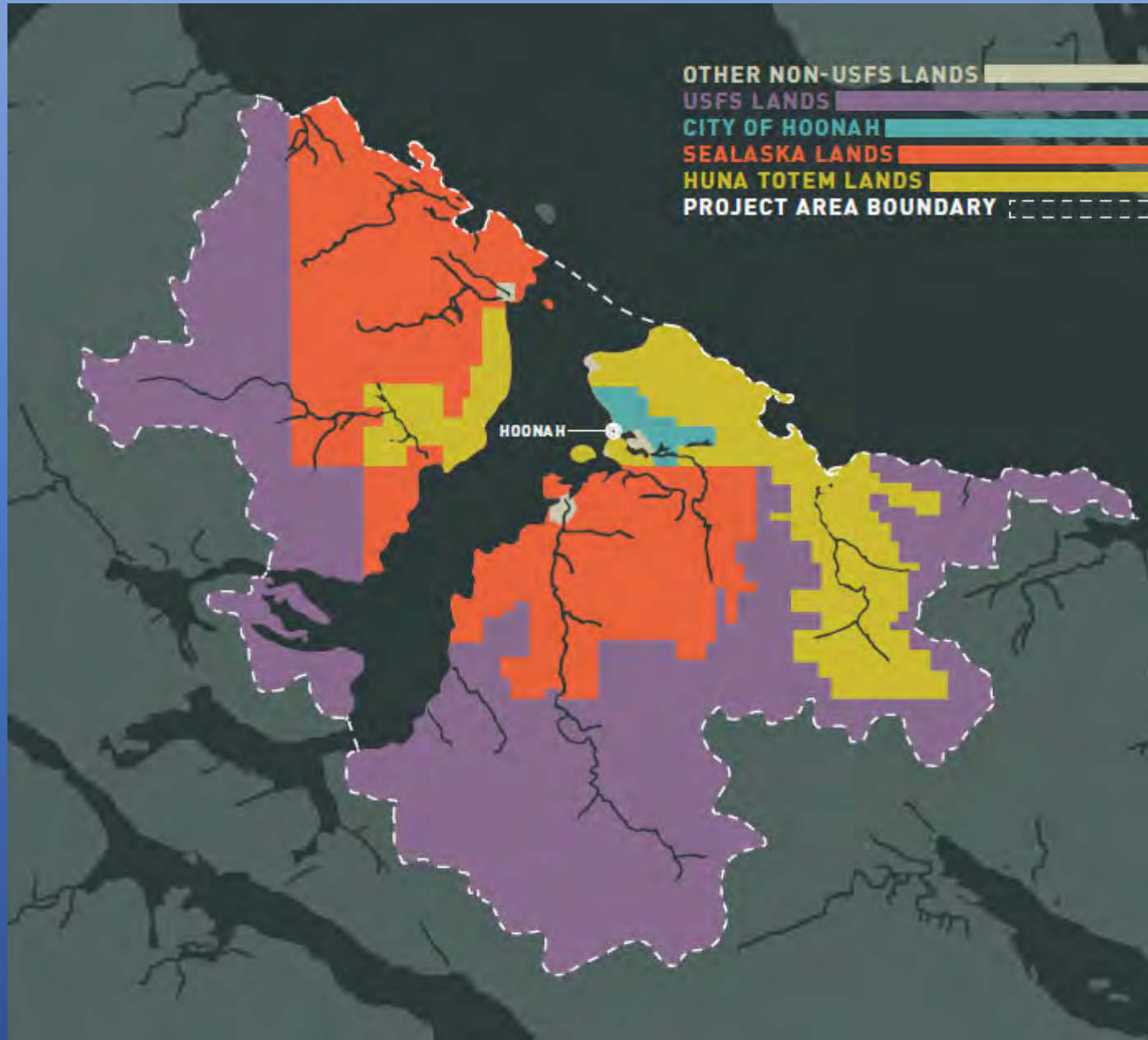
SITKA

KETCHIKAN

ALASKA

Spasski Stream Restoration

Hoonah Native Forest Partnership



PERCENT OF
PRODUCTIVE
FOREST
HARVESTED
(By Watershed)



Roads are a critical piece of infrastructure for industry and subsistence activities. Timber harvest and associated road building have occurred in most of the watersheds in the HNFP study area and continue to provide local jobs, but roads effect the landscape in a variety of ways. Roads may block fish from passing up- or downstream, or degrade water quality and fish habitat by contributing sediment to streams if they begin to erode. Without maintenance, long-term, negative impacts can occur. Road maintenance issues are especially pertinent as recreational uses are growing—fueled in part by tourism development—and will continue to be a critical part of both Hoonah’s subsistence and economic vitality.

*Hoonah needs
timber and deer,
roads and salmon,
wildlife and **people.***

Spasski Creek Watershed:

33,097
ACRES IN SIZE

70% OF DEER
WINTER RANGE
HARVESTED

6,354
ACRES OF TIMBER
HARVEST

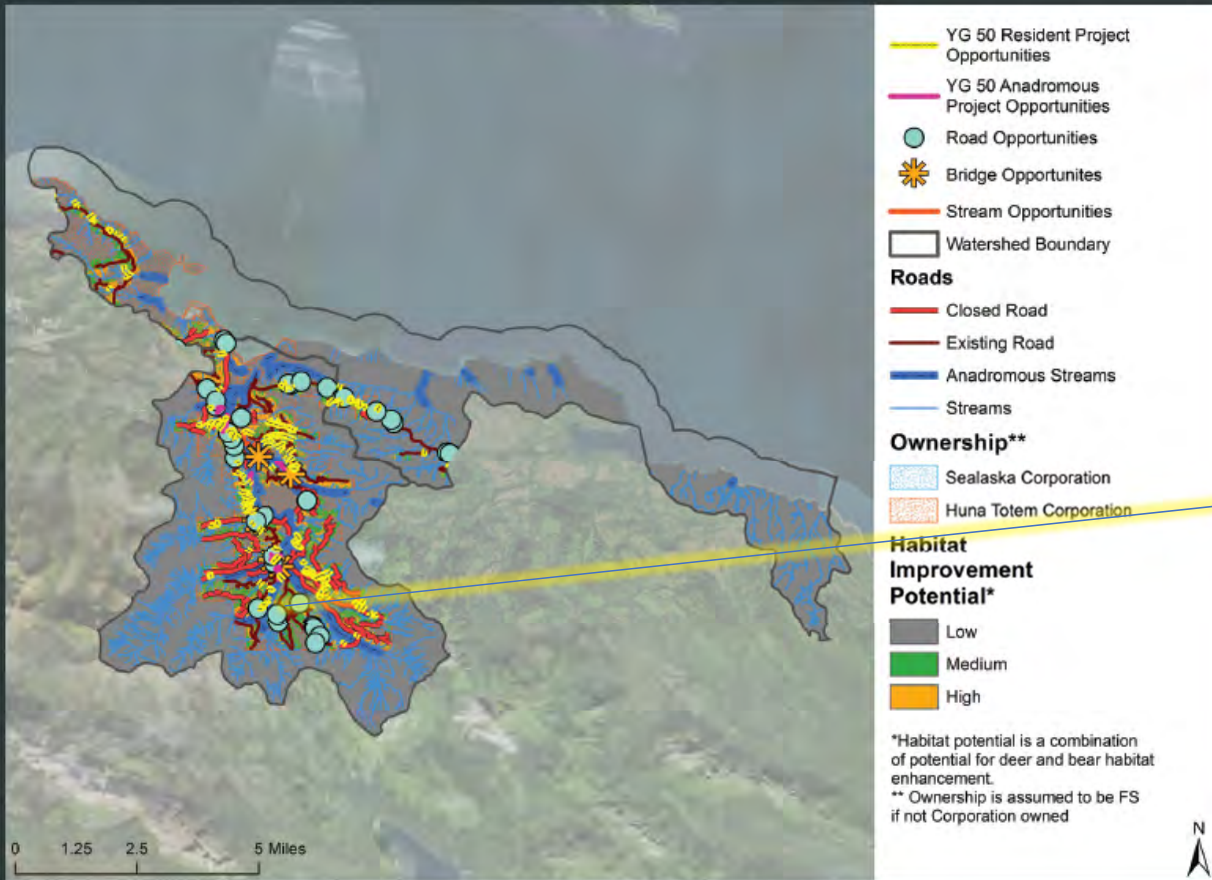
LAND OWNERSHIP:

79.7
MILES OF ROAD

12.4
MILES OF HIGH-
QUALITY PINK AND
CHUM HABITAT

>50% OF
PRODUCTIVE
TIMBER
HARVESTED

60% FOREST SERVICE
40% HUNA TOTEM



Working Together

- People:
 - Hoonah Indian Association
 - NRCS, USFS
 - Huna Totem and Sealaska Corporations
- Funding:
 - Regional Conservation Partnership Program, Environmental Quality Incentives Program (NRCS)
 - Forest Service internal funding
 - Tribal Fish and Wildlife (USFWS)

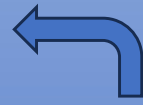




Before

After

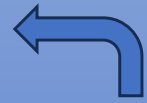




Before

After





Before

After





Before

After





Before

After





Before

After





Before



After

Protecting the island, secondary channel fortified with subsurface wood to prevent future scour



Upstream HNFP crew – 2 hand tool sites installed.
7 equipment sites installed downstream.



Hand tool LWD installed downstream prior to AOP improvement. Monitoring continues on this site.

Project consideration:

Install LWD to sort sediment that has been retained upstream due to undersized culverts.



See video at <https://youtu.be/nfff4CcHflc>



Ch'u tleix áwé kugaagastee.

Let it exist forever.