



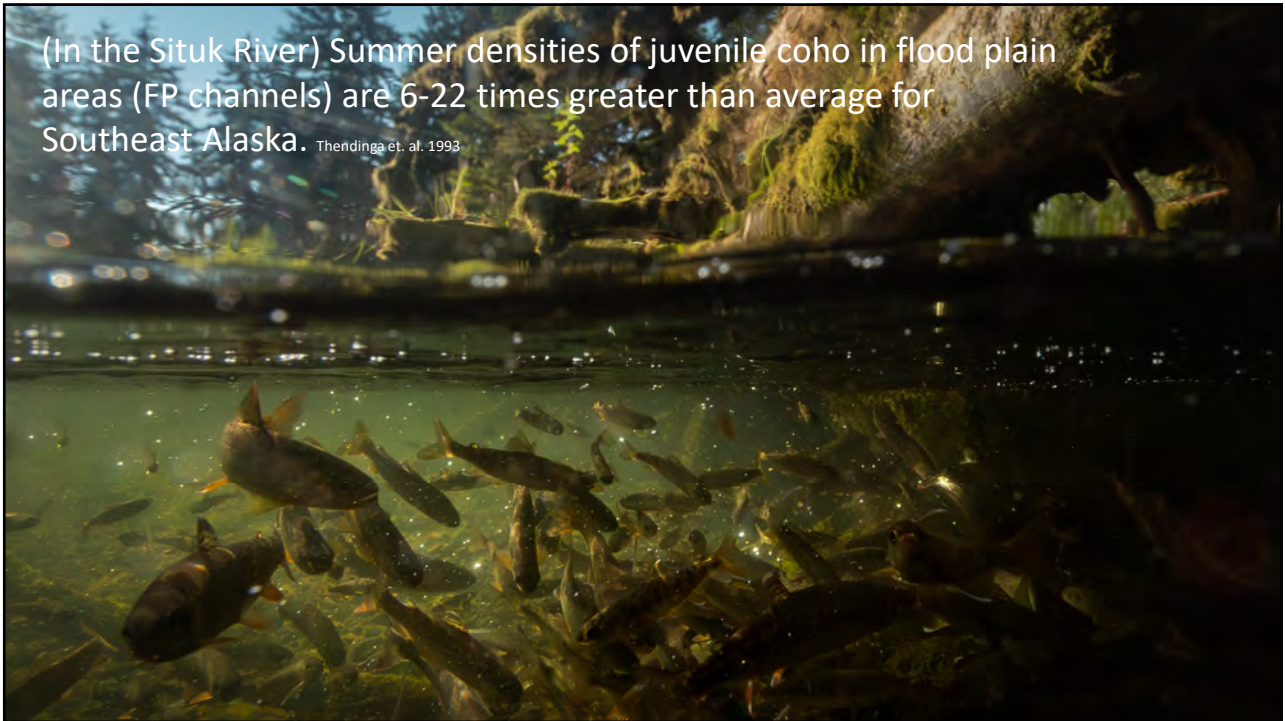
1



2



3



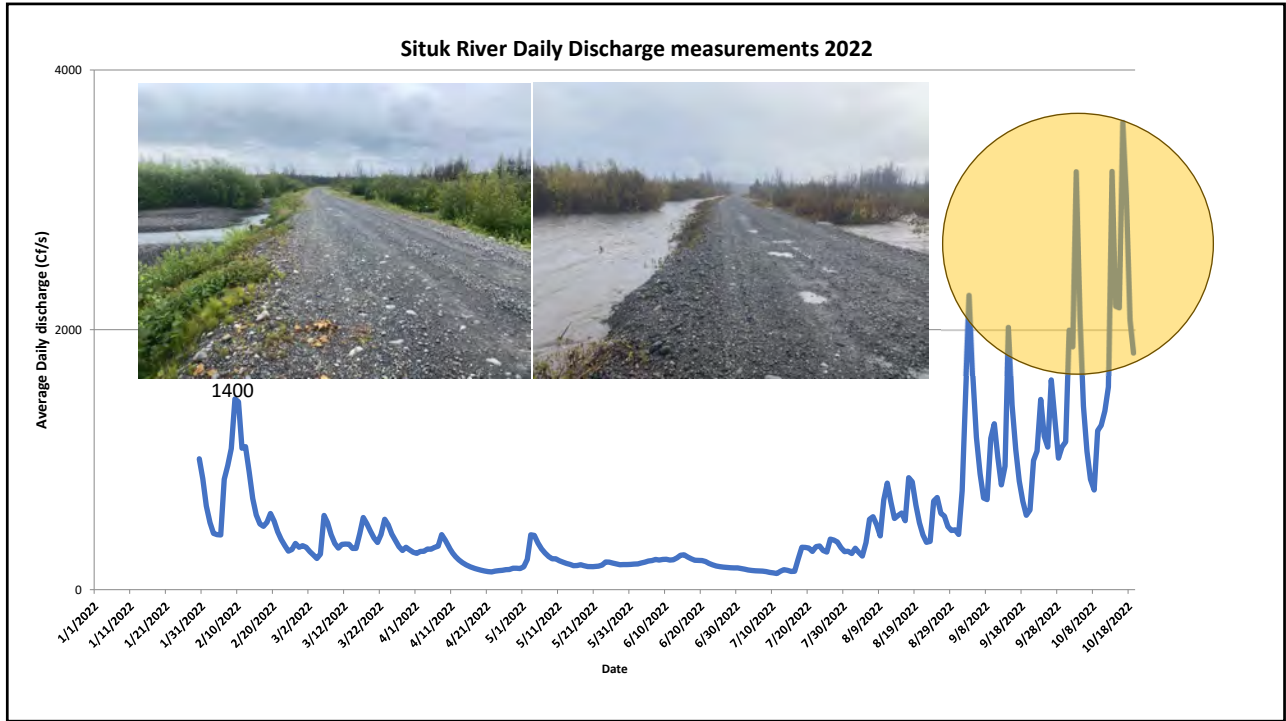
4



5



6



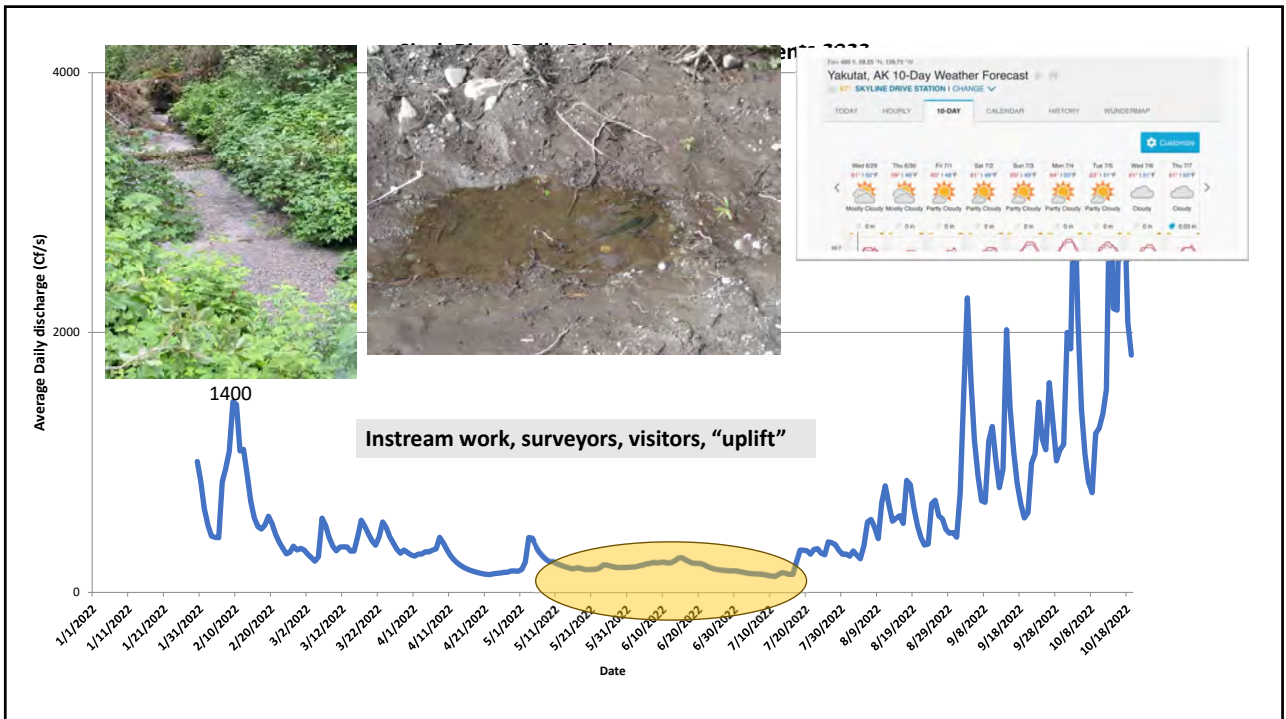
7



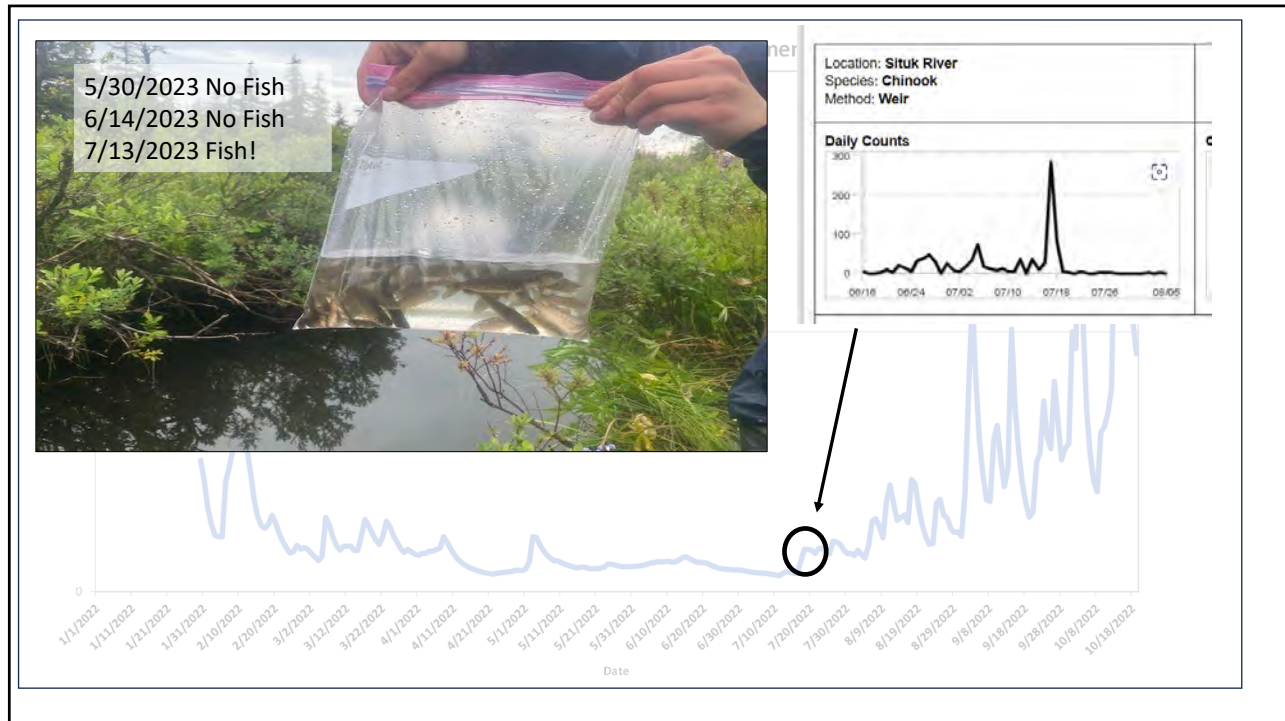
8



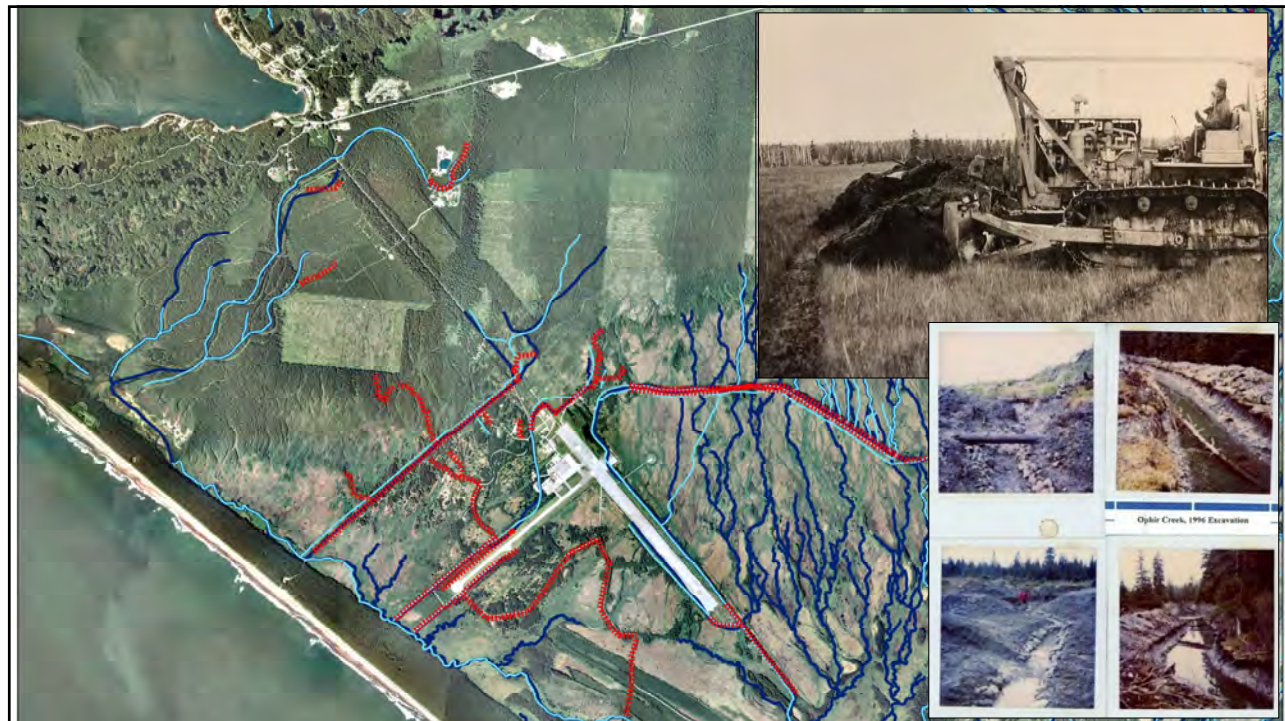
9



10



11



12



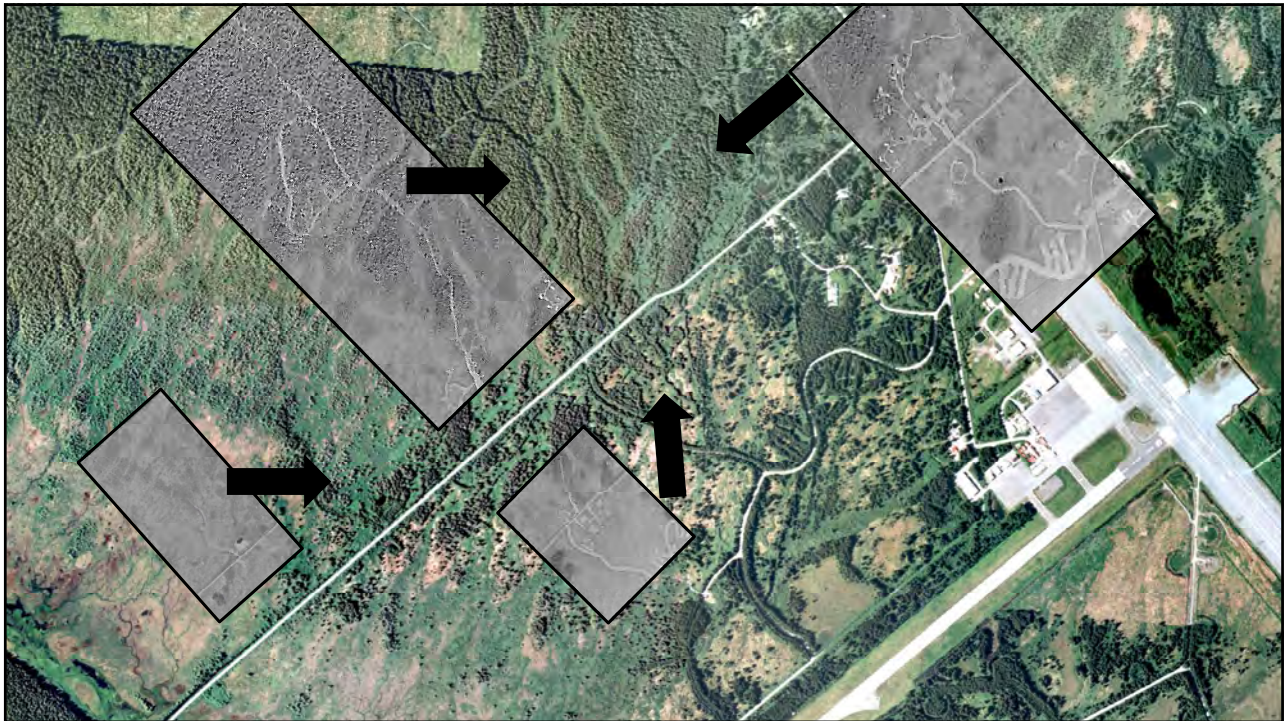
13



14



15



16



17



18



19



20



21



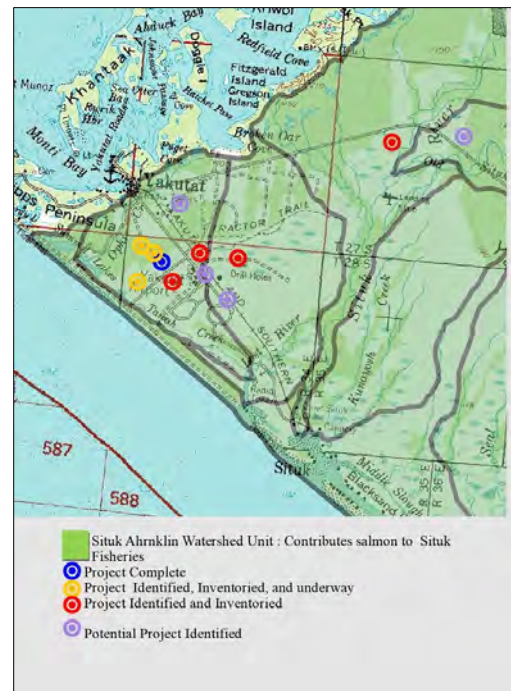
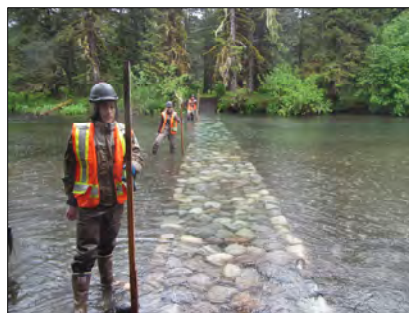
22



23

Salmon Partners

- Utilize local partners to address these issues.
- ~10 sites identified
- Across land jurisdictions (all flowing into the National Forest and Contributing fish to the Situk Ahrnklin)
- Goal is to be flexible and adaptable
- Build capacity across the partnerships
- Resilient to changes in personal changes , management direction, funding,



24



Questions?